

LAND

DEVELOPMENT SITE
PORT COQUITLAM, BC



- Potential Mixed Use Mid-Rise Site
- Close to Downtown Port Coquitlam
- ~92,000 SF Lot Size [RAMAN BAYANZADEH, POURIA NIKRAVAN, DEAN THOMAS]

DEVELOPMENT SITE
COQUITLAM, BC



- 1167-1171 Pipeline Road
- High Rise Residential [DEAN THOMAS]
- Lot Size: 1.31 Acres [RAMAN BAYANZADEH, EUGEN KLEIN, POURIA NIKRAVAN]
- Transit Oriented

LANDMARK DEVELOPMENT SITE
VANCOUVER, BC



- Combined Lot Size: 298,000 SF
- Hotel, Residential, Commercial Use
- Est. Height 377; Current FSR: 5.0 [EUGEN KLEIN, DEAN THOMAS]
- 1330 - 1360 Hornby St.

DEVELOPMENT SITE
NEW WESTMINSTER, BC



- 323 Governors Court, near Sapperton Station
- 7 Acres, Medium Density, Rapid Transit
- http://bit.ly/323GovernorsCrt [DEAN THOMAS, RAMAN BAYANZADEH, POURIA NIKRAVAN]

DEVELOPMENT SITE
NEW WESTMINSTER, BC



- Total Lot Area: 116,751 SF
- 0.8 - 1.2 Potential FSR
- Transit Oriented
- 1500 6th Avenue [EUGEN KLEIN]

LAND

DEVELOPMENT SITE
COQUITLAM, BC



- 1148-1154 Westwood St., 1145 Heffley Cres.
- Multi (3) High Rise Potential [DEAN THOMAS]
- Transit Oriented [RAMAN BAYANZADEH, EUGEN KLEIN, POURIA NIKRAVAN]
- Lot Size: 112,493 SF

DEVELOPMENT SITE
SOUTH SURREY, BC



- 30 Single Detached Homes
- Fully Serviced, Fully Rented
- 128,000 SF of Land, 42,000 SF rentable
- ~\$24,000,000 [EUGEN KLEIN]

PURPOSE BUILT RENTAL
EAST VANCOUVER, BC



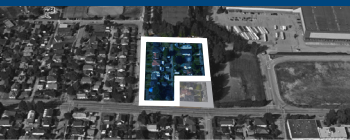
- Grandview-Woodland Neighbourhood
- Total Lot Area: 99'x122', Potential of 28,900 Buildable SF; 6 Storeys; 2.4 Potential FSR
- Principals Only [EUGEN KLEIN]

DEVELOPMENT SITE
BURNABY, BC



- 4345 & 4389 Grange Street
- Combined Lot Size: ~50,837 SF
- High Rise Density [RAMAN BAYANZADEH, POURIA NIKRAVAN, EUGEN KLEIN]

TOWNHOUSE ASSEMBLY
NEW WESTMINSTER, BC



- Total Lot Area: 101,701.13 SF
- 0.8 - 1.2 Potential FSR
- Near Braid Station
- Garrett St. & Wilson St. [EUGEN KLEIN]

RETAIL / OFFICE

STRATA OFFICES FOR SALE
NORTH VANCOUVER, BC



- 3711 Delbrook Ave
- 1,926 SF of Finished Office Properties
- 4 Storey Development Potential [RAMAN BAYANZADEH, POURIA NIKRAVAN]

COMMERCIAL RETAIL FOR SALE
NORTH VANCOUVER, BC



- 106A/106 Delbrook Ave
- 707 SF Ground Floor Retail Unit
- Future Development Potential - 4 Storey
- \$565,000 [RAMAN BAYANZADEH, POURIA NIKRAVAN]

HAIR SALON BUSINESS FOR SALE
NORTH VANCOUVER, BC



- Over \$100,000 in Improvements
- Established Customer Base
- Attractive Net Income
- \$195,000 [RAMAN BAYANZADEH, POURIA NIKRAVAN]

BEAD/GEMSTONE BUSINESS
VANCOUVER, BC



- 25 Years of History
- Over \$130,000 EBIDTA for Owner Operator
- Sales Growth Opportunity [RAMAN BAYANZADEH, POURIA NIKRAVAN]

DEVELOPMENT LAND FOR SALE
SURREY, BC



- 10641 133 St; Potential Land Assembly
- Lot Size: 10,475 SF; Close to Sky Train
- OCP 2.5 FSR Multi-Family [DMYTRO CHERNYSH, DEAN THOMAS]

INDUSTRIAL

INDUSTRIAL BUSINESS PARK | CHILLIWACK, BC



- 46520 Airport Road
- Lot Size: 15 Acres (3.75 to 15 Acres)
- Zoning: Light Industrial (M1)
- Municipal Services at the Lot Line: Water, Power Sewer [DMYTRO CHERNYSH]

\$1.99M - 2.05M / ACRE

INDUSTRIAL DEVELOPMENT LAND
SURREY, BC



- Lot Size: 2 Acres; Fully Usable
- Great Location by HWY 1/HWY 17
- \$3,850,000 [DMYTRO CHERNYSH, DEAN THOMAS]

INDUSTRIAL LAND FOR SALE
CHILLIWACK, BC



- 44394 Progress Way
- Lot Size: 2.5 Acres; M2 Zoning
- Municipal Services: Water, Power, Sewer [DMYTRO CHERNYSH, EUGEN KLEIN]

INDUSTRIAL FOR SALE/LEASE
BLAINE, WA



- 3.98 to 45 Acres Available
- 10,000 SF - 500,000 SF Buildable Ready
- \$2.2M - 10.8M USD [EUGEN KLEIN, RAMAN BAYANZADEH, DEAN THOMAS]

INVESTMENT

MOBILE HOME PARK FOR SALE
CACHE CREEK, BC



- 1299, 1321 Old Cariboo Rd; 3.01 Acres
- 19 Pads; Fully Serviced with Water & Sewer
- Well Maintained, Riprap completed in 2020
- \$925,000 [EUGEN KLEIN]

MOBILE HOME & RV PARK
WILLIAMS LAKE, BC



- 4195 Wildwood Road
- 42 Pads, 32 RV Stalls, 1 Cabin
- \$300,000 Revenue
- \$2,398,000 [EUGEN KLEIN]

MOBILE HOME PARK FOR SALE
FORT NELSON, BC



- 4.8 Acres, 48 Pads, 7.5% Cap Rate
- City Water, Sewer, Waste Removal
- Central to All Essential Amenities
- \$815,000 [EUGEN KLEIN]

BEECHWOOD ESTATES | MAYNE ISLAND, BC



- 797 Beechwood Dr
- Lot Size: 96 Acres
- 840' Waterfront
- Develop 18 Rural Dwellings, Redevelopment Potential [EUGEN KLEIN]

\$3,299,000

MOBILE HOME PARK FOR SALE
MIDWAY, BC



- 925 Thirteenth Ave, 5 Acres, City Services
- 10 Pad Pot. Exp. 23 Pads, 5 RV, 12 Seasonal RV
- Lifestyle or Cash Flow Investment
- \$1,750,000 [EUGEN KLEIN]

RESORT & RV PARK FOR SALE
HARRISON MILLS, BC



- 44562 Lougheed Hwy; 1.6 Acres
- 45 RV Stalls/Pads; Waterfront Hide-a-Way w/ Cabins, Store Front, Gas Station, Post Office
- \$5,299,000 [EUGEN KLEIN]

MOTEL FOR SALE
SALMO, BC



- Two Titles, Detached Home w/Motel Property
- 6 Unit Retro Motel w/Potential 7 Units
- Lot Size: 0.41 Acres; Turn Key Business
- 123 Railway Avenue; \$520,000 [EUGEN KLEIN]






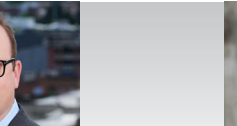
MARINA POTENTIAL
MAYNE ISLAND, BC



- Lot A, Horton Bay
- Lot Size: 5 Acres; 795' Waterfront Lot
- Private Dock for Large & Small Vessels
- \$1,950,000 [EUGEN KLEIN]

ARE YOU ON OUR LIST?

Choose what you receive. To subscribe email us at exclusive@kleingroup.com or visit kleingroup.com

 <p>Raman Bayanzadeh 604-684-8844 x707 raman@kleingroup.com</p>	 <p>Dmytro Chernysh 604-684-8844 x704 dmytro@kleingroup.com</p>	 <p>Amir Kamyab-Nejad 604-684-8844 x712 Amir@kleingroup.com</p>	 <p>Eugen Klein 604-684-8844 x701 eklein@kleingroup.com</p>	 <p>Pouria Nikravan 604-684-8844 x702 pouria@kleingroup.com</p>	 <p>Dean Thomas 604-684-8844 x706 dthomas@kleingroup.com</p>
---	---	---	---	--	--